

2.0 INDUCTANCE: (P1-P2) 350uH MIN @0.1V, 100KHZ, 8mA DC BIAS
(P7-P8) 350uH MIN @0.1V, 100KHZ, 8mA DC BIAS

3.0 LEAKAGE INDUCTANCE: P1-P2(WITH J1 AND J2 SHORT) : 0.3uH MAX @1MHZ
P7-P8(WITH J3 AND J6 SHORT) : 0.3uH MAX @1MHZ

4.0 INTERWINDING CAPACITANCE: (P1-P2): (J1-J2) : 35pF MAX @ 1MHZ
(P7-P8): (J3-J6) : 35pF MAX @ 1MHZ

5.0 DC RESISTANCE: (J1-J2): (J3-J6): 1.2 OHMS MAX

6.0 RETURN LOSS: 1MHZ TO 30MHZ : -18dB MIN
30MHZ TO 80MHZ : -12dB MIN

7.0 DIELECTRIC WITHSTAND: (P1-P2): (J1-J2) : 1500VAC
(P7-P8): (J3-J6) : 1500VAC

8.0 INSERTION LOSS: RS=RL=1000HM 100KHZ TO 80MHZ : -1.1dB MIN

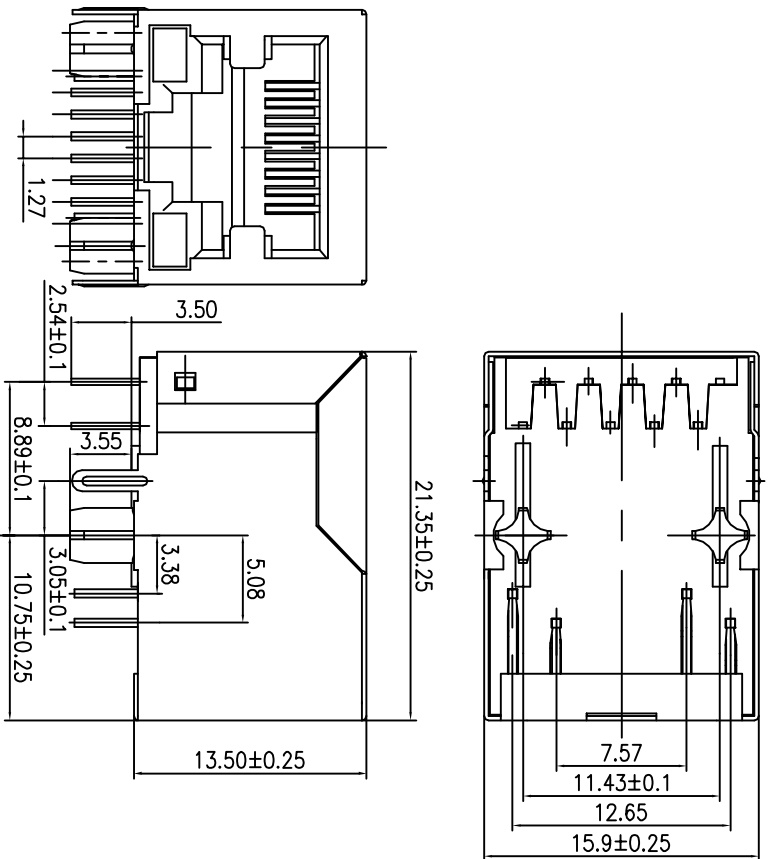
9.0 RISE TIME : RS=1000HMSAND RL=1000HMS : 3.0ns MAX
OUTPUT VOLTAGE=1V PEAK : 3.0ns MAX
PULSE WIDTH=112ns

10.0 CROSS TALK: 1MHZ TO 100MHZ 40dB TYP

11.0 COMMON TO COMMON MODE ATTENUATION: 30MHZ TO 100MHZ : 35dB TYP

SIZE	DRAWING NO.	REV
A	KW-10005-13	01
SCALE		SHEET
N/A		3 OF 5

MECHANIC SPECIFICATIONS:

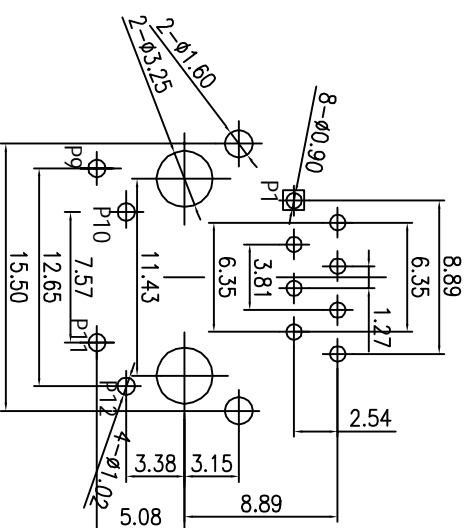


LED SPECIFICATION		
STANDARD LED	WAVELENGTH	Forward V(max)
GREEN	565nm	2.4V
YELLOW	590nm	2.5V
		TYP
		2.2V
		2.1V

*WITH A FORWARD CURRENT OF 20mA

- NOTES:
- CONNECTOR MATERIAL:
HOUSING: THERMOPLASTIC UL94 V-0
CONTACT/SOLDER: COPPER ALLOY
SOLDER PLATING: NICKEL OR TIN
CONTACT PLATING: SELECTIVE GOLD,
 - 50 MICRO-INCHS MIN
 - 30 MICRO-INCHS MIN
 - 15 MICRO-INCHS MIN
 - 6 MICRO-INCHS MIN
 - 3 MICRO-INCHS MIN
 - IN CONTACT AREA

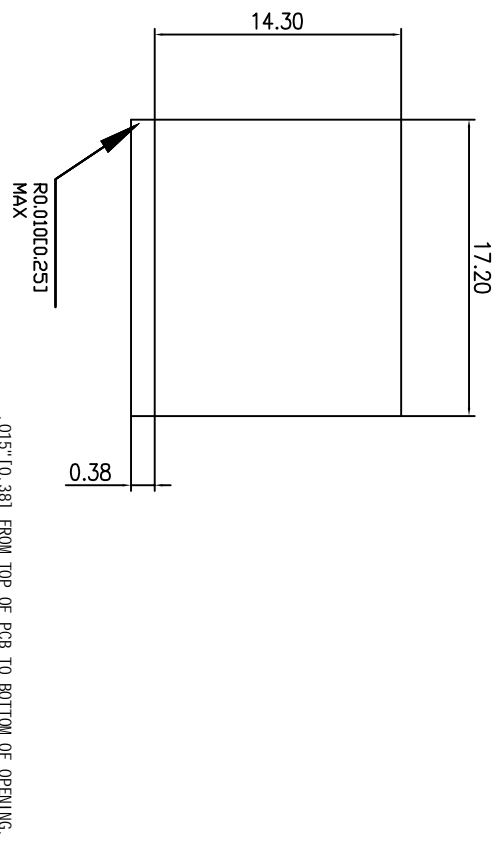
- PIN NOT ELECTRICALLY CONNECTED MAYBE OMITTED SEE ELECTRICAL DRAWING FOR OMITTED PINS
- TOLERANCES COMPLY WITH F. C. C. DIMENSION REQUIREMENTS
- WAVE SOLDER COMPATIBLE-PREHEAT 125 C DEGREE/90SECS
- ALL TOLERANCES NOT OTHERWISE SPECIFIED TO BE ±0.1mm.



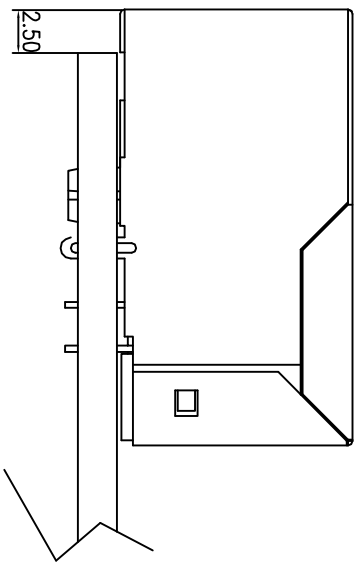
P. C. B RECOMMENDED HOLE LAYOUT SEEN FROM COMPONENT SIDE.

ALL CENTERLINE DIMENSIONS ARE BASIC

SIZE	DRAWING NO.	REV
A	KW-10005-13	01
SCALE		SHEET
N/A		4 OF 5



1 SUGGESTED PANEL OPENING (N. T. S)



1. THE SUGGESTED PANEL OPENING IS INTENDED TO GIVE THE USER THE ABILITY TO HAVE REASONABLE JACK/PANEL CLEARANCES CAPABILITY.
2. ALL TOLERANCES NOT OTHERWISE SPECIFIED TO BE ±0.005 INCH(0.13)

SIZE	DRAWING NO.	REV
A	KW-10005-13	01
SCALE		SHEET
N/A		5 OF 5