

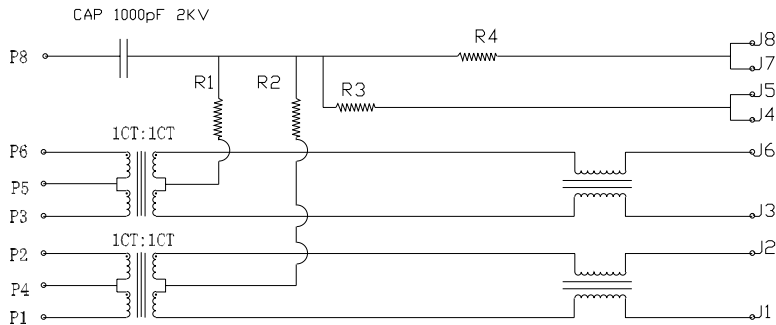
SPECIFICATION FOR APPROVAL

PRODUCT NAME: _____

PRODUCT NO : **KW-10017-3** _____

CUSTOMER NO : _____

REV : _____ DATE : _____



ELECTRICAL SPECIFICATIONS:

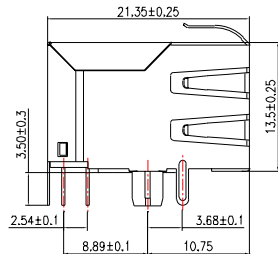
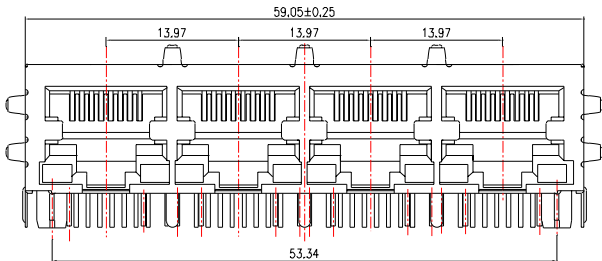
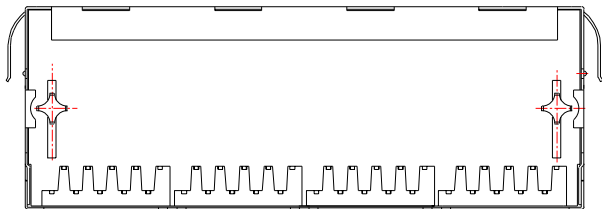
- 1.0 TURN RATIO: (P1~P2):(J1~J2) :1:1±3%
(P3~P6):(J3~J6) :1:1±3%
- 2.0 INDUCTANCE: (P1~P2) 350uH MIN @ 0.1V,100KHZ, 8mA DC BIAS
(P3~P6) 350uH MIN @ 0.1V,100KHZ, 8mA DC BIAS
- 3.0 LEAKAGE INDUCTANCE:(P1~P2)WITH J1 AND J2 SHORT) :0.3uH MAX @1 MHZ
(P3~P6)WITH J3 AND J6 SHORT) :0.3uH MAX @1 MHZ

SIZE A	DRAWING NO. KW-10017-3	REV 01
SCALE N/A		SHEET 2 OF 7

4.0 INTERWINDING CAPACITANCE:(P1~P2):(J1~J2) (P3~P6):(J3~J6)	:35pF MAX @ 1MHZ :35pF MAX @ 1MHZ
5.0 DC RESISTANCE:(J1~J2):(J3~J6)	:1.2 OHMS MAX
6.0 RETURN LOSS: 1MHZ TO 30MHZ 30MHZ TO 80MHZ	:-18dB MIN :-12dB MIN
7.0 DIELECTRIC WITHSTAND:(P1~P2):(J1~J2) (P3~P6):(J3~J6)	:1500VAC :1500VAC
8.0 INSERTION LOSS:RS=RL=100OHM 100KHZ TO 80MHZ	: -1.1dB MIN
9.0 RISE TIME:RS=100 OHMS AND RL=100OHMS OUTPUT VOLTAGE=1V PEAK PULSE WIDTH= 112nS	: 30nS MAX : 30nS MAX
10.0 CROSS TALK: 1MHZ TO 100MHZ	40dB TYP
11.0 COMMON TO COMMON MODE ATTENUATION: 30MHZ TO 100MHZ	:35dB TYP

SIZE A	DRAWING NO. KW-10017-3	REV 01
SCALE N/A		SHEET 3 OF 7

MECHANIC SPECIFICATIONS:



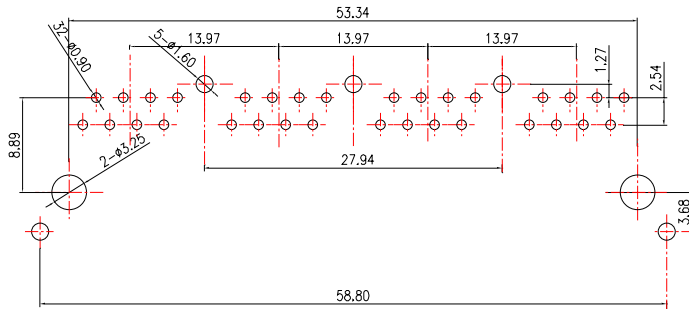
NOTES:

1. CONNECTOR MATERIAL:
HOUSING: THERMOPLASTIC UL94 V-0
 - CONTACT/SHIELD: COOPER ALLOY
 - SHIELD PLATING: NICKEL OR TIN
 - CONTACT PLATING: SELECTIVE GOLD,
50 MICRO-INCHS MIN
 - 30 MICRO-INCHS MIN
 - 15 MICRO-INCHS MIN
 - 6 MICRO-INCHS MIN
 - 3 MICRO-INCHS MIN
- IN CONTACT AREA

2. PIN NOT ELECTRICALLY CONNECTED MAYBE OMITTED SEE ELECTRICAL DRAWING FOR OMITTED PINS
3. TOLERANCES COMPLY WITH F. C. C DIMENSION REQUIREMENTS
4. WAVE SOLDER COMPATIBLE-PREHEAT 125 C DEGREE/90SECS
5. ALL TOLERANCES NOT OTHERWISE SPECIFIED TO BE $\pm 0.1\text{mm}$.

SIZE A	DRAWING NO. KW-10017-3	REV 01
SCALE N/A		SHEET 4 OF 7

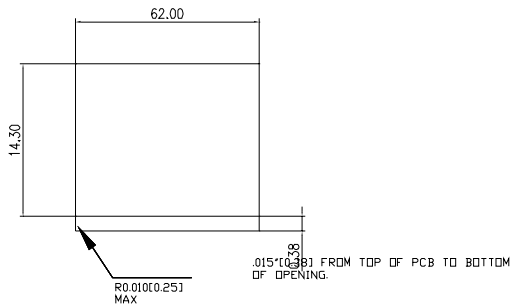
MECHANIC SPECIFICATIONS:



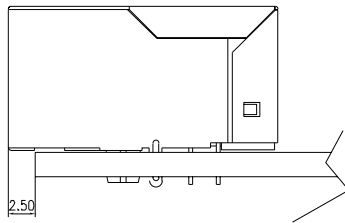
P.C.B RECOMMENDED HOLE LAYOUT SEEN FROM COMPONENT SIDE.

ALL CENTERLINE DIMENSIONS ARE BASIC

SIZE A	DRAWING NO. KW-10017-3	REV 01
SCALE N/A		SHEET 5 OF 7



1.SUGGESTED PANEL OPENING(N.T.S)



- 1.THE SUGGESTED PANEL OPENING IS INTENDED TO GIVE THE USER THE ABILITY TO HAVE REASONABLE JACK/PANEL CLEARANCES CAPABILITY.
- 2.ALL TOLERANCES NOT OTHERWISE SPECIFIED TO BE ± 0.005 INCH(0.13)

SIZE A	DRAWING NO. KW-10017-3	REV 01
SCALE N/A		SHEET 6 OF 7