

SPECIFICATION FOR APPROVAL

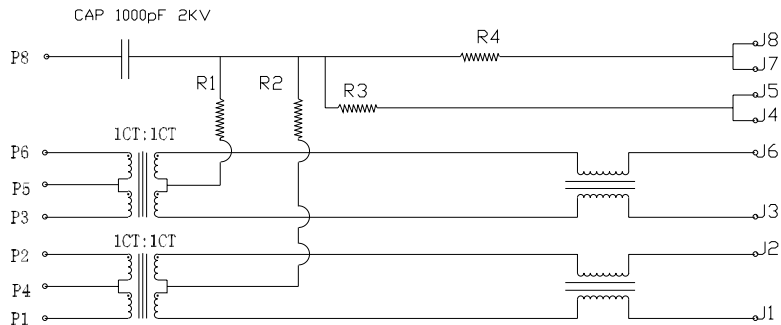
PRODUCT NAME: 1*1 Tab-down with transformer and EMI, 0/W LED, A3.05

PRODUCT NO : KW-10017-6

CUSTOMER NO : _____

REV : _____ DATE : _____

| | | | |
|--|--|--|--|
| | | | |
| | | | |



ELECTRICAL SPECIFICATIONS:

- 1.0 TURN RATIO: (P1~P2):(J1~J2) $\pm 1 \pm 3\%$
 (P3~P6):(J3~J6) $\pm 1 \pm 3\%$
- 2.0 INDUCTANCE: (P1~P2) 350uH MIN @ 0.1V,100KHZ, 8mA DC BIAS
 (P3~P6) 350uH MIN @ 0.1V,100KHZ, 8mA DC BIAS
- 3.0 LEAKAGE INDUCTANCE: P1~P2<WITH J1 AND J2 SHORT> :0.3uH MAX @1 MHZ
 P3~P6<WITH J3 AND J6 SHORT> :0.3uH MAX @1 MHZ

| | | |
|--------------|---------------------------|-----------------|
| SIZE A | DRAWING NO. KW-10017-6 | REV 01 |
| SCALE N/A | | SHEET 2 OF 7 |

| | |
|--|--------------------------------------|
| 4.0 INTERWINDING CAPACITANCE:(P1~P2):(J1~J2) (P3~P6):(J3~J6) | :35pF MAX @ 1MHZ :35pF MAX @ 1MHZ |
| 5.0 DC RESISTANCE:(J1~J2):(J3~J6) | :1.2 OHMS MAX |
| 6.0 RETURN LOSS: 1MHZ TO 30MHZ 30MHZ TO 80MHZ | :-18dB MIN :-12dB MIN |
| 7.0 DIELECTRIC WITHSTAND:(P1~P2):(J1~J2) (P3~P6):(J3~J6) | :1500VAC :1500VAC |
| 8.0 INSERTION LOSS:RS=RL=100OHM 100KHZ TO 80MHZ | : -1.1dB MIN |
| 9.0 RISE TIME:RS=100 OHMS AND RL=100OHMS OUTPUT VOLTAGE=1V PEAK PULSE WIDTH= 112nS | :3.0nS MAX :3.0nS MAX |
| 10.0 CROSS TALK: 1MHZ TO 100MHZ | 40dB TYP |
| 11.0 COMMON TO COMMON MODE ATTENUATION: 30MHZ TO 100MHZ | :35dB TYP |

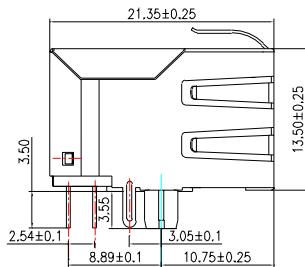
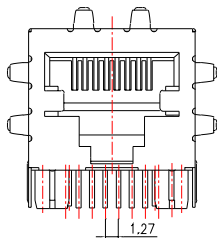
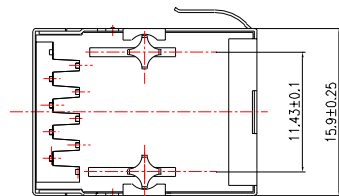
| | | |
|--------------|---------------------------|-----------------|
| SIZE A | DRAWING NO. KW-10017-6 | REV 01 |
| SCALE N/A | | SHEET 3 OF 7 |

MECHANIC SPECIFICATIONS:

NOTES:

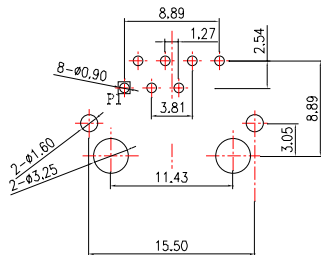
1. CONNECTOR MATERIAL:
HOUSING: THERMOPLASTIC UL94 V-0
CONTACT/SHIELD: COOPER ALLOY
SHIELD PLATING: NICKEL OR TIN
CONTACT PLATING: SELECTIVE GOLD,

| | |
|--------------------|--------------------------|
| 50 MICRO-INCHS MIN | <input type="checkbox"/> |
| 30 MICRO-INCHS MIN | <input type="checkbox"/> |
| 15 MICRO-INCHS MIN | <input type="checkbox"/> |
| 6 MICRO-INCHS MIN | <input type="checkbox"/> |
| 3 MICRO-INCHS MIN | <input type="checkbox"/> |
2. PIN NOT ELECTRICALLY CONNECTED MAYBE OMITTED SEE ELECTRICAL DRAWING FOR OMITTED PINS
3. TOLERANCES COMPLY WITH F. C. C DIMENSION REQUIREMENTS
4. WAVE SOLDER COMPATIBLE-PREHEAT 125 C DEGREE/90SECS
5. ALL TOLERANCES NOT OTHERWISE SPECIFIED TO BE $\pm 0.1\text{mm}$.



| | | |
|--------------|----------------------------------|-----------------|
| SIZE A | DRAWING NO. KW-10017-6 | REV 01 |
| SCALE N/A | | SHEET 4 OF 7 |

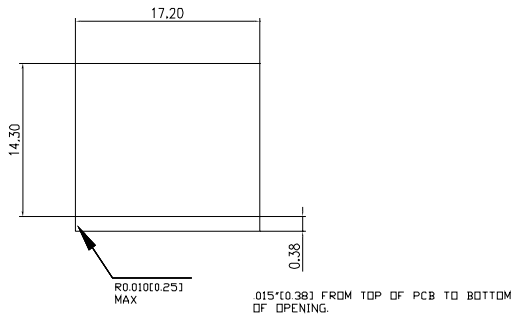
MECHANIC SPECIFICATIONS:



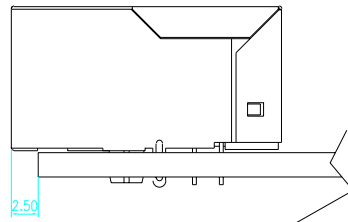
P.C.B RECOMMENDED HOLE LAYOUT SEEN FROM COMPONENT SIDE.

ALL CENTERLINE DIMENSIONS ARE BASIC

| | | |
|--------------|---------------------------|-----------------|
| SIZE A | DRAWING NO. KW-10017-6 | REV 01 |
| SCALE N/A | | SHEET 5 OF 7 |



1 SUGGESTED PANEL OPENING (N.T.S)



1. THE SUGGESTED PANEL OPENING IS INTENDED TO GIVE THE USER THE ABILITY TO HAVE REASONABLE JACK/PANEL CLEARANCES CAPABILITY.
2. ALL TOLERANCES NOT OTHERWISE SPECIFIED TO BE ± 0.005 INCH (0.13)

| | | |
|--------------|----------------------------------|-----------------|
| SIZE A | DRAWING NO. KW-10017-6 | REV 01 |
| SCALE N/A | | SHEET 6 OF 7 |