

# SPECIFICATION FOR APPROVAL

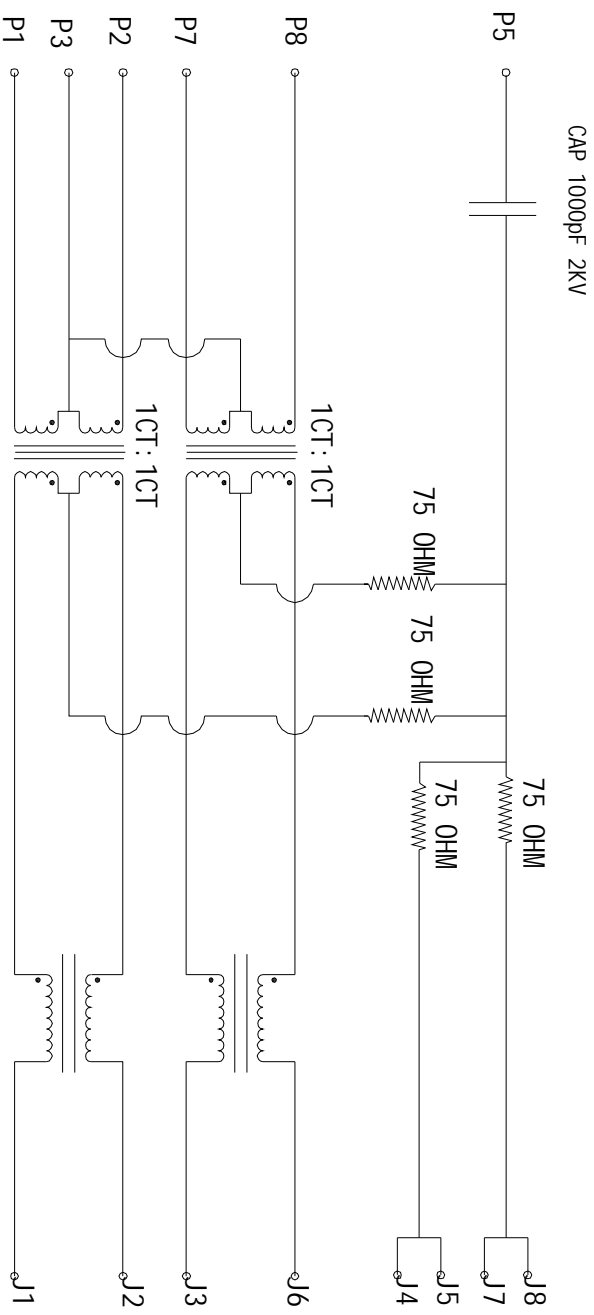
PRODUCT NAME: TAB-DOWN 4 PORTS A3.05 100BT unshield

PRODUCT NO : KW-10070

CUSTOMER NO : \_\_\_\_\_

REV : \_\_\_\_\_

DATE : \_\_\_\_\_

# ELECTRICAL SPECIFICATIONS:

- 1.0 TURN RATIO: (P1-P2): (J1-J2) : 1:1 ±3%
- (P7-P8): (J3-J6) : 1:1 ±3%

SIZE	DRAWING NO.	REV
A	KW-10070	01
SCALE		SHEET
N/A		2 OF 7

2.0 INDUCTANCE: (P1-P2) 350uH MIN @0.1V, 100KHZ, 8mA DC BIAS  
(P7-P8) 350uH MIN @0.1V, 100KHZ, 8mA DC BIAS

3.0 LEAKAGE INDUCTANCE: P1-P2(WITH J1 AND J2 SHORT) : 0.3uH MAX @1MHZ  
P7-P8(WITH J3 AND J6 SHORT) : 0.3uH MAX @1MHZ

4.0 INTERWINDING CAPACITANCE: (P1-P2): (J1-J2) : 35pF MAX @ 1MHZ  
(P7-P8): (J3-J6) : 35pF MAX @ 1MHZ

5.0 DC RESISTANCE: (J1-J2): (J3-J6): 1.2 OHMS MAX

6.0 RETURN LOSS: 1MHZ TO 30MHZ : -18dB MIN  
30MHZ TO 80MHZ : -12dB MIN

7.0 DIELECTRIC WITHSTAND: (P1-P2): (J1-J2) : 1500VAC  
(P7-P8): (J3-J6) : 1500VAC

8.0 INSERTION LOSS: RS=RL=100OHM 100KHZ TO 80MHZ : -1.1dB MIN

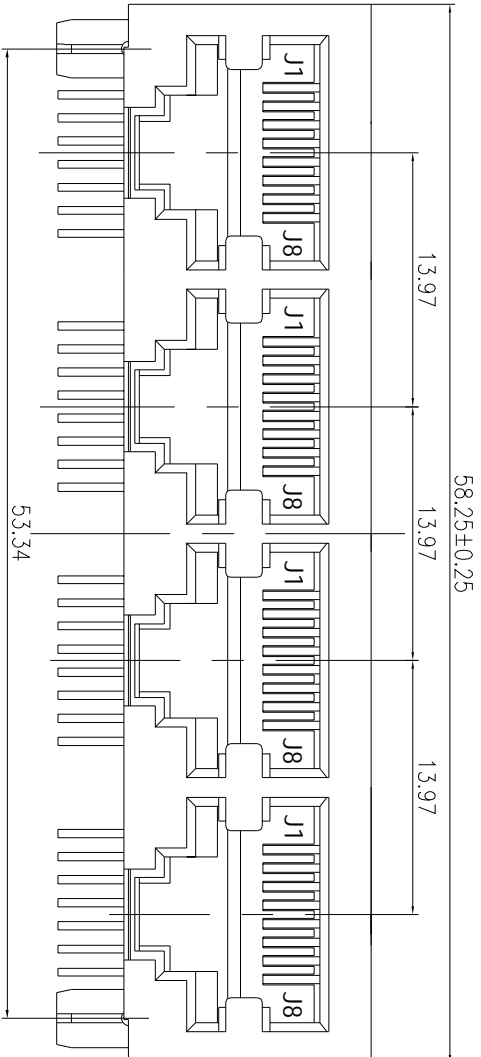
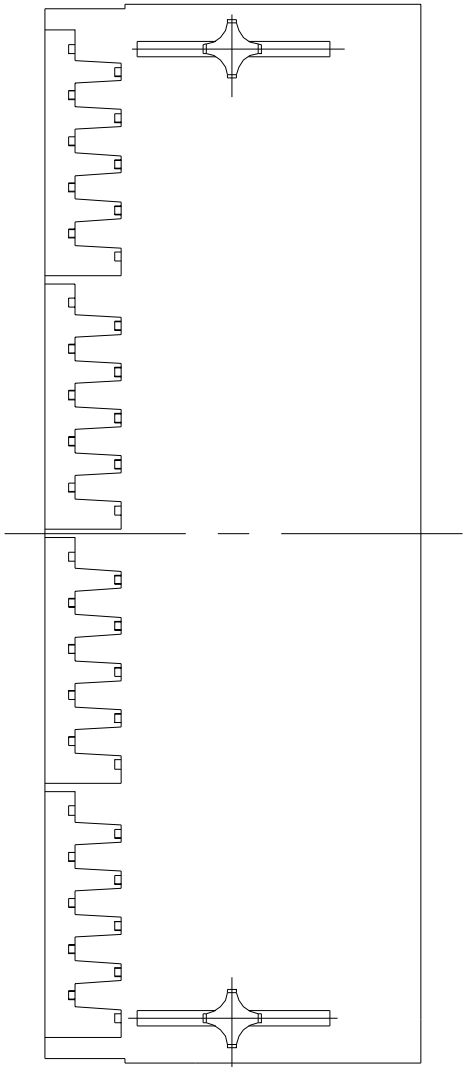
9.0 RISE TIME : RS=100OHMSAND RL=100OHMS : 3.0nS MAX  
OUTPUT VOLTAGE=1V PEAK : 3.0nS MAX  
PULSE WIDTH=112nS

10.0 CROSS TALK: 1MHZ TO 100MHZ 40dB TYP

11.0 COMMON TO COMMON MODE ATTENUATION: 30MHZ TO 100MHZ : 35dB TYP

SIZE	DRAWING NO.	REV
A	KW-10070	01
SCALE		SHEET
N/A		3 OF 7

# MECHANIC SPECIFICATIONS:

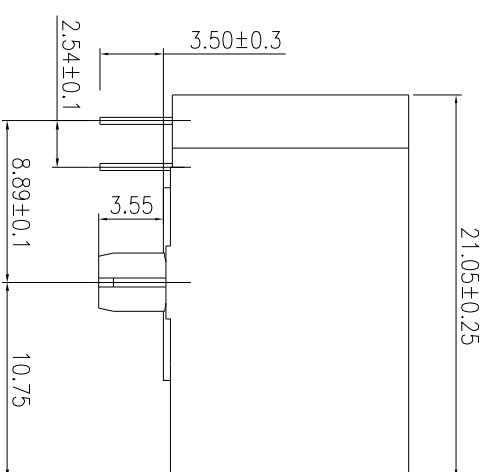


**NOTES:**

1. CONNECTOR MATERIAL:  
HOU SING: THERMOPLASTIC UL94 V-0  
CONTACT/SHIELD: COOPER ALLOY  
SHIELD PLATING: NICKEL OR TIN  
CONTACT PLATING: SELECTIVE GOLD,  

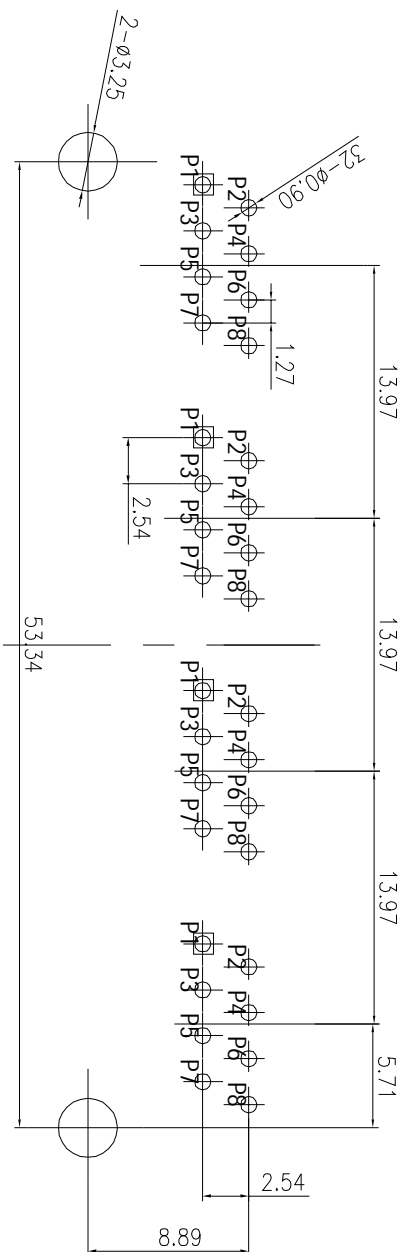
50 MICRO-1INCHS MIN	<input type="checkbox"/>
30 MICRO-1INCHS MIN	<input type="checkbox"/>
15 MICRO-1INCHS MIN	<input type="checkbox"/>
6 MICRO-1INCHS MIN	<input type="checkbox"/>
3 MICRO-1INCHS MIN	<input type="checkbox"/>

 IN CONTACT AREA
2. PIN NOT ELECTRICALLY CONNECTED MAYBE OMITTED SEE ELECTRICAL DRAWING FOR OMITTED PINS
3. TOLERANCES COMPLY WITH F. C. C DIMENSION REQUIREMENTS
4. WAVE SOLDER COMPATIBLE-PREHEAT 125 C DEGREE/90SECS
5. ALL TOLERANCES NOT OTHERWISE SPECIFIED TO BE ±0.1mm.



SIZE	DRAWING NO.	REV
A	KW-10070	01
SCALE		SHEET
N/A		4 OF 7

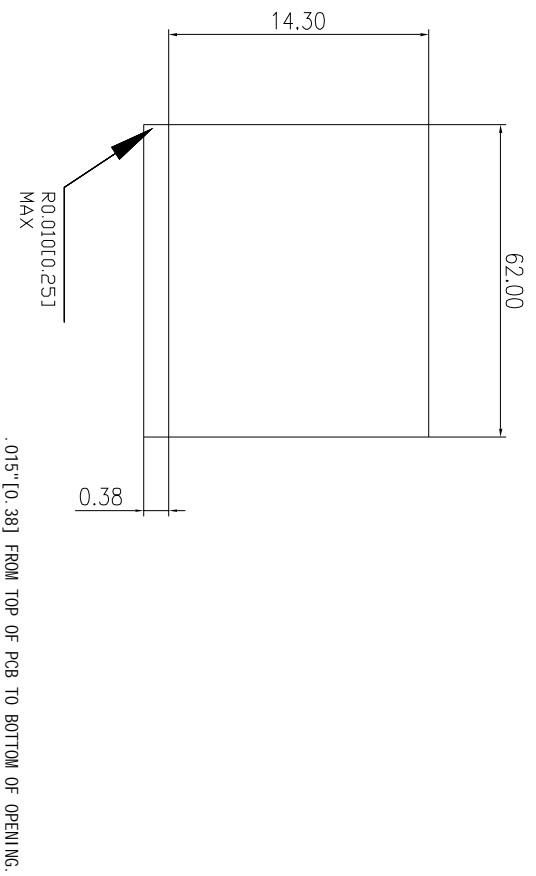
# MECHANIC SPECIFICATIONS:



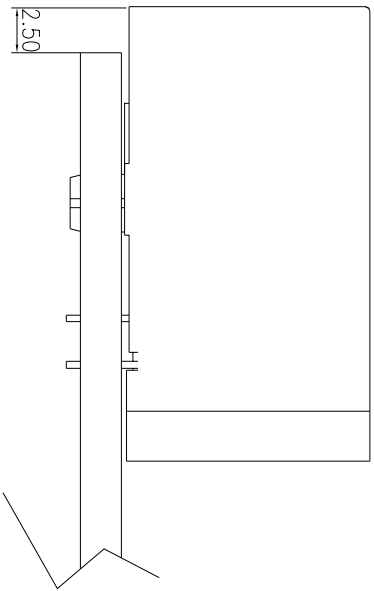
P. C. B. RECOMMENDED HOLE LAYOUT SEEN FROM COMPONENT SIDE.

ALL CENTERLINE DIMENSIONS ARE BASIC

SIZE	DRAWING NO.	REV
A	KW-10070	01
SCALE		SHEET
N/A		5 OF 7



1 SUGGESTED PANEL OPENING (N. T. S)



1. THE SUGGESTED PANEL OPENING IS INTENDED TO GIVE THE USER THE ABILITY TO HAVE REASONABLE JACK/PANEL CLEARANCES CAPABILITY.
2. ALL TOLERANCES NOT OTHERWISE SPECIFIED TO BE  $\pm 0.005$  INCH (0.13)

SIZE	DRAWING NO.	REV
A	KW-10070	01
SCALE		SHEET
N/A		2 OF 7